

FIG. A

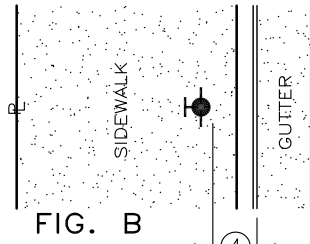


FIG. B

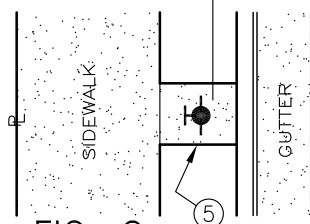
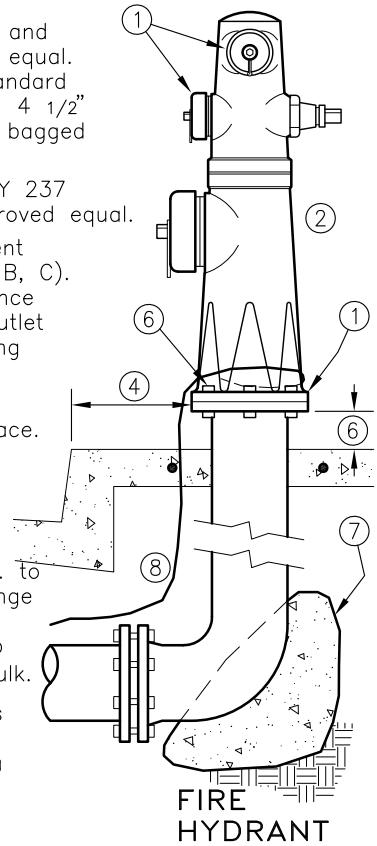


FIG. C

NOTES:

- ① Hydrant shall have 6-hole flange, all bronze body and bronze caps; Jones 3760, Clow 2060 or approved equal. Outlets shall be manufacturer's 2 1/2" National Standard hose thread and 4 1/2" National Standard thread. 4 1/2" outlet shall point toward street. Hydrant shall be bagged until it is available for use.
- ② Hydrant shall be painted with Sherwin Williams ALLY 237 Industrial Enamel - Safety Yellow Base or an approved equal.
- ③ Hydrant shall be located behind sidewalk if sufficient right-of-way exists (Fig. A), or behind curb (Fig. B, C). If located behind sidewalk, 1 foot minimum clearance shall be provided between back of sidewalk and outlet cap nut. Install hydrant reflector(s) per Engineering Standard #7920.
- ④ Standard setback from curb face, 18" to 21". Sidewalk shall have a minimum of 3.5' of clearspace.
- ⑤ When located in unpaved area, hydrant installation shall include 4' x 4' x 6" minimum P.C.C. pad doweled into curb and sidewalk, #4 @ 18" o.c. and one #4 rebar hoop.
- ⑥ Hydrant shall be installed to provide 3 inches min. to 4 inches max. clearance between underside of flange and sidewalk surface, and shall have 5/8" x 3" drilled break away bolts installed, with nuts on top of flange and bolts filled with silicone or butyl caulk.
- ⑦ Thrust block, Class 3 P.C.C., shielded from flanges and bolts.
- ⑧ Tracer wire shall be brought to the surface with a minimum of 18" above finished grade. See Eng. Std. #6340 and Trench Details.

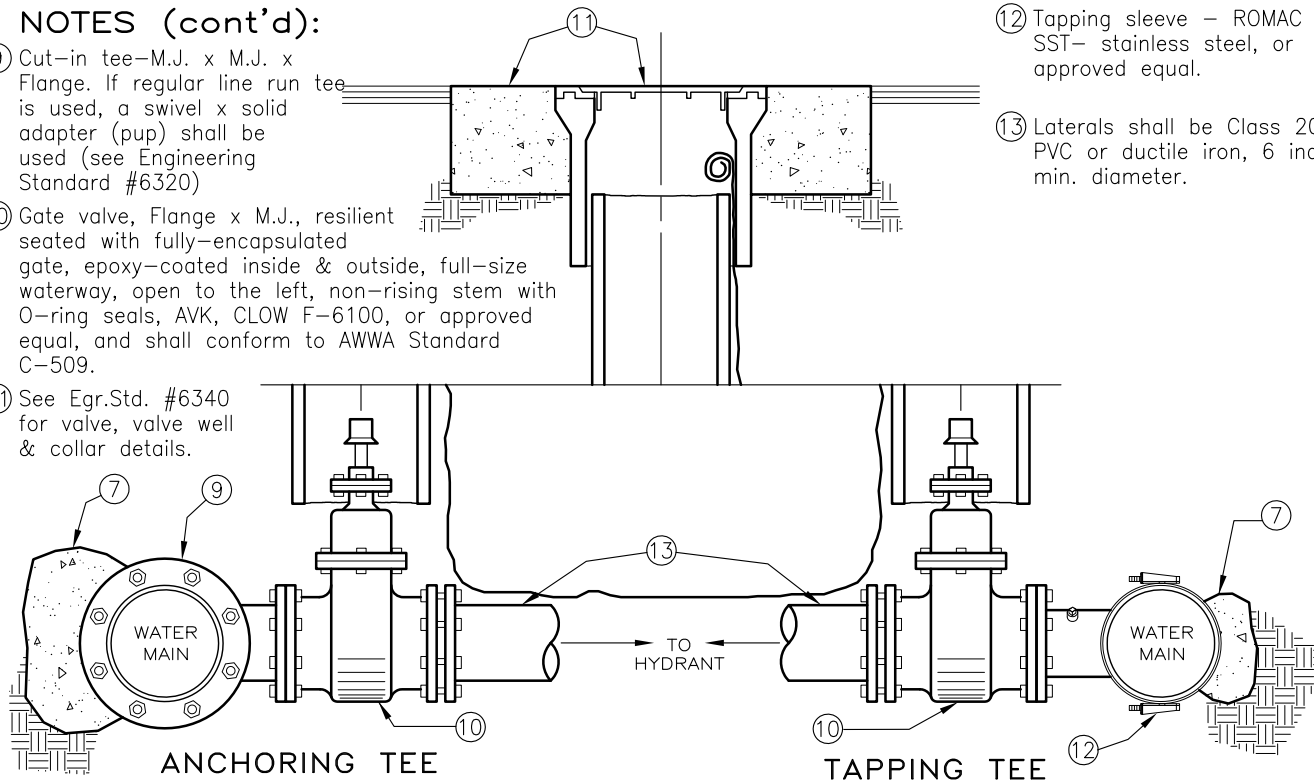


FIRE HYDRANT

NOTES (cont'd):

- ⑨ Cut-in tee-M.J. x M.J. x Flange. If regular line run tee is used, a swivel x solid adapter (pup) shall be used (see Engineering Standard #6320)
- ⑩ Gate valve, Flange x M.J., resilient seated with fully-encapsulated gate, epoxy-coated inside & outside, full-size waterway, open to the left, non-rising stem with O-ring seals, AVK, CLOW F-6100, or approved equal, and shall conform to AWWA Standard C-509.
- ⑪ See Egr.Std. #6340 for valve, valve well & collar details.

- ⑫ Tapping sleeve - ROMAC SST- stainless steel, or approved equal.
- ⑬ Laterals shall be Class 200 PVC or ductile iron, 6 inch min. diameter.



ANCHORING TEE

TAPPING TEE

REVISIONS	BY	APP	DATE
Revised Note 4	MH	BL	10-05
Rev notes 2 & 5	DVB	BL	10-06
Revised note 8	MH	BL	11-09
STANDARD CURRENT AS OF:			January 2010



FIRE HYDRANT ASSEMBLY