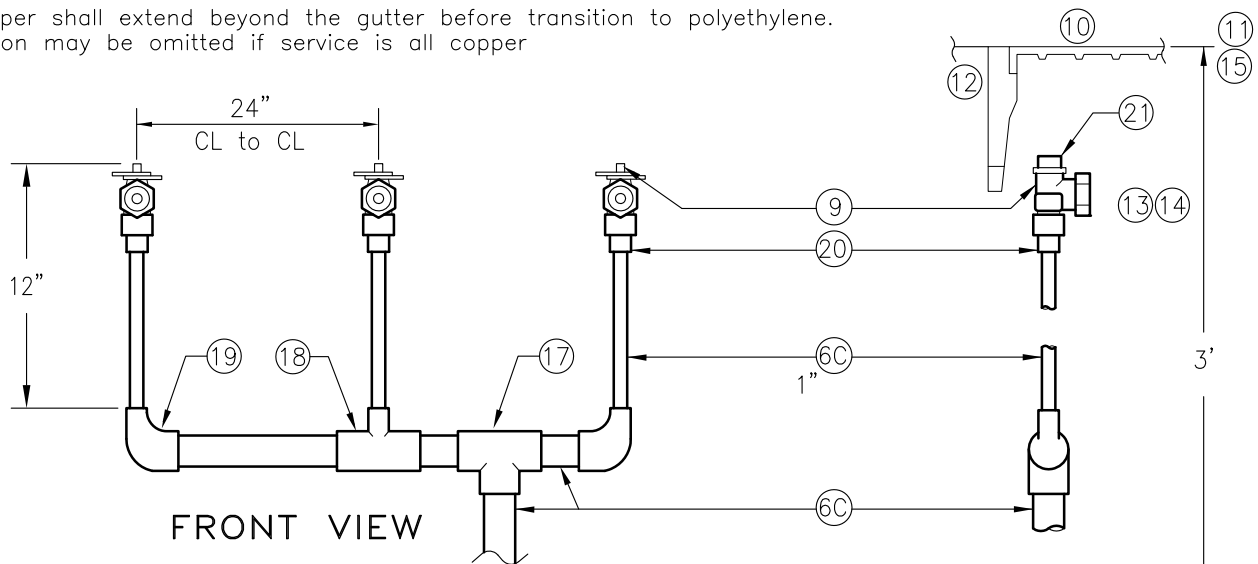
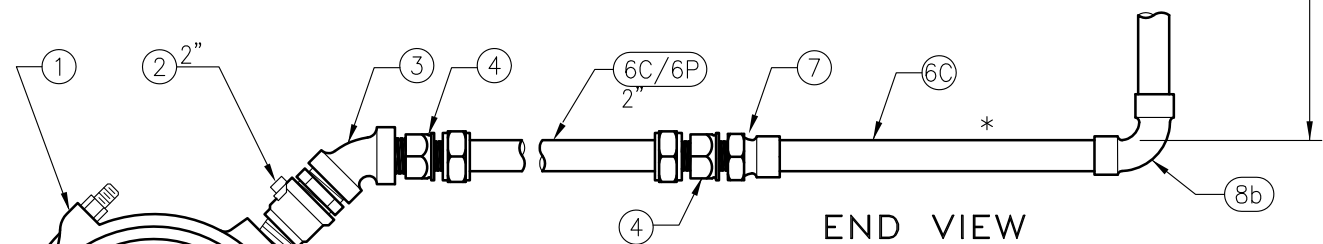


* 2" copper shall extend beyond the gutter before transition to polyethylene.
Transition may be omitted if service is all copper



FRONT VIEW



END VIEW

GENERAL NOTES:

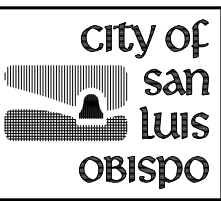
- A. through H. - See Engineering Standard #6210
- I. Each 2" service line shall serve no more than four (4) 1" meters or six (6) 3/4" meters. Meters larger than 1" shall be served by separate 2" service lateral, unless an alternative configuration is approved by the City Engineer. If installing more than four (4) meters on a single manifold, angle meter stops shall be 1-inch by 3/4-inch outlet to prevent future up-sizing of meters.
- J. Extra tracer wire shall be coiled in the meter box closest to the service line.
- K. When replacing an existing manifold, the customer side, including valves and laterals, shall be reconstructed as needed to transition to existing lateral. Customer valve shall be replaced with a new valve in these cases.

OTHER NOTES:

- (1) through (8) & (10) through (16) - See Engineering Standard #6210
- (9) 1" angle meter stop - JONES J-1527 or FORD FV13 Series
- (17) Copper tee, all sweat - 2" x 2", Service line shall be at or near center of manifold.
- (18) Copper tee, all sweat - 2" x 1"
- (19) Copper reducing ell, sweat x sweat - 2" x 1"
- (20) Adaptor, sweat x MIP
- (21) Each service shall be designated to an address and/or unit by attaching a 1/2" brass tag with 1/4" minimum letters/numbers to the curb stop with a non-ferrous wire. Meter boxes shall be in alphabetical or numerical order with respect to address, reading left to right when facing the structure.

APPROVED EQUAL ACCEPTED FOR ALL FITTINGS

REVISIONS	BY	APP	DATE
Renumbr notes	SR	BL	3-06
revise note I	DVB	BL	10-06
Add note K	DVB	BL	11-07
STANDARD CURRENT AS OF: January 2010			



MANIFOLD
MULTIPLE WATER SERVICES