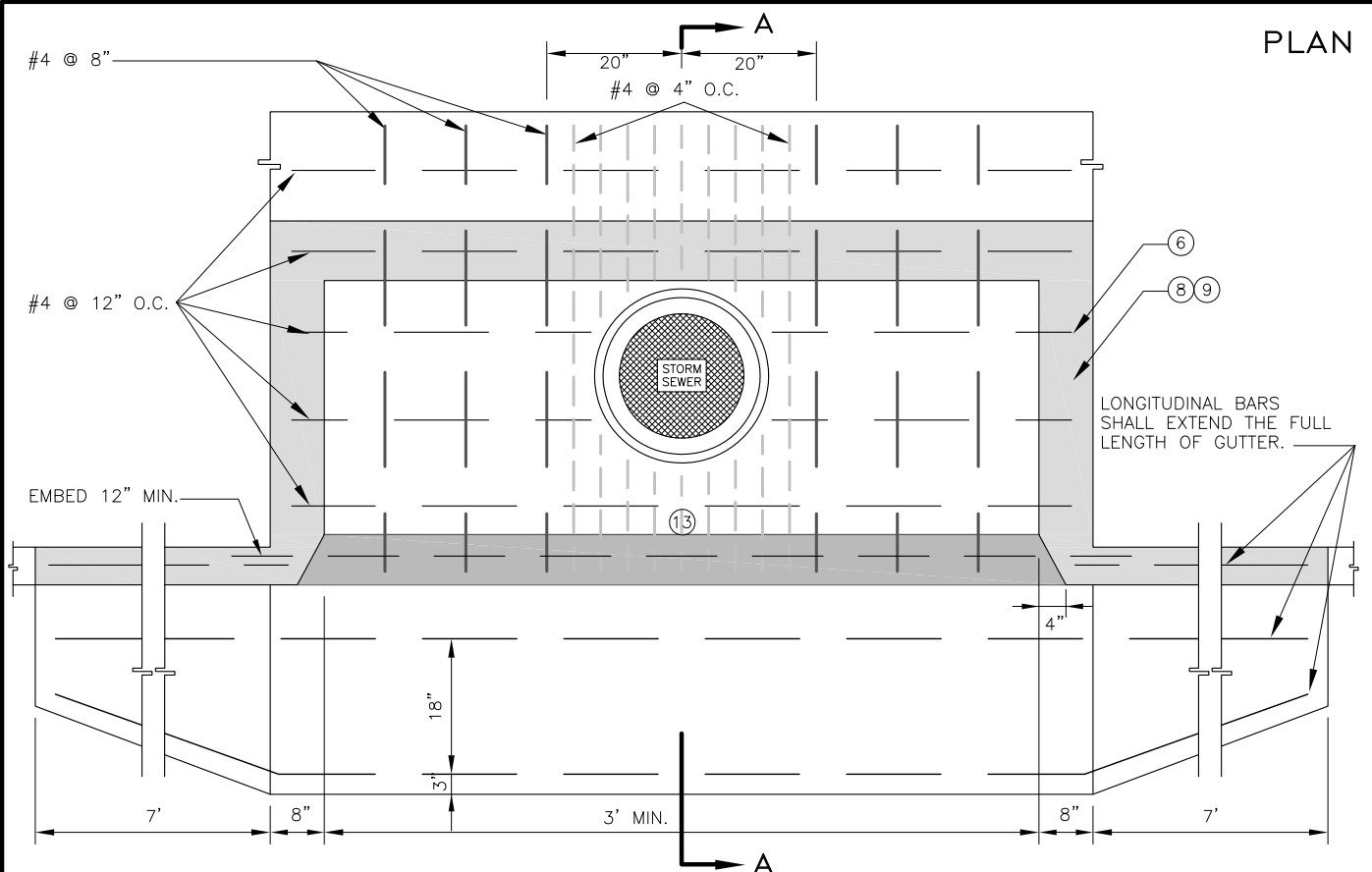
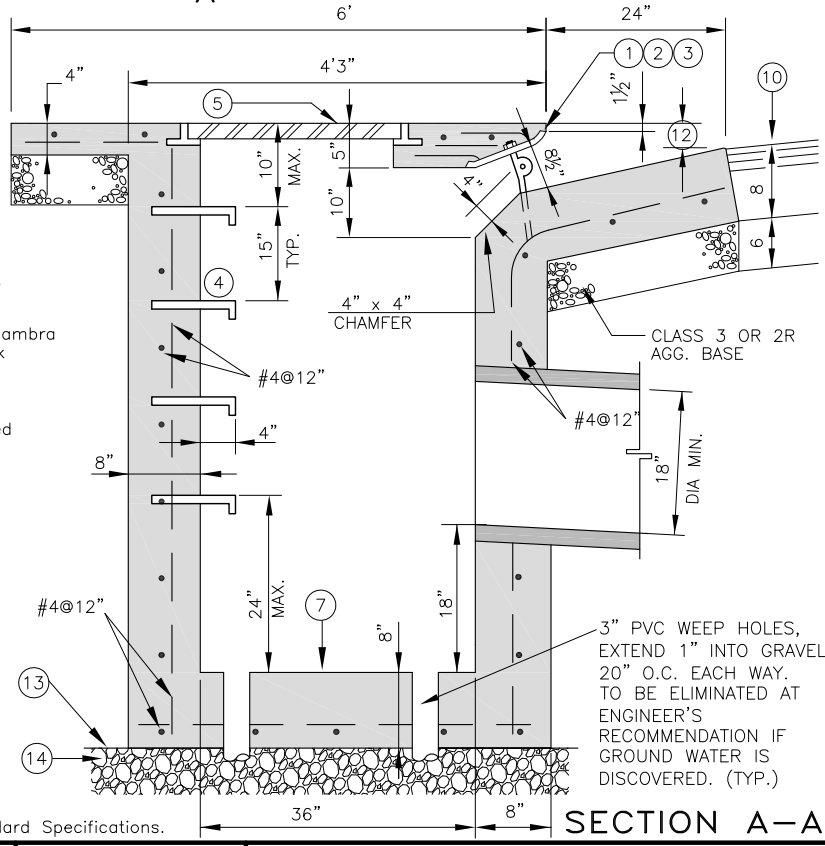


PLAN



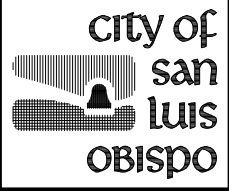
NOTES:

- * Items 1 through 3 shall be galvanized Alhambra, South Bay Foundry or equal.
- ① Formed steel face plate, A-3911, w/ factory installed anchors. Face plate shall be 6" longer on each side of the opening at the face of the curb.
- ② Protection bar, A-1565, bar and anchors, A-1577
- ③ Protection bar support bolt(s), A-1574, spaced 20 7/8" apart.
- ④ Steps are required when depth exceeds 4' and shall be steel reinforced polypropylene, M-A Industries PS2-PFS or equal.
- ⑤ Manhole frame and cover, South Bay Foundry 1530, Alhambra A-1530 or approved equal, placed adjacent to the back wall in the center of the basin. Where the horizontal dimension of the basin equals or exceeds 8', a second lid shall be installed. One lid over the outlet and a second lid centered in the remaining area or as directed by the Engineer.
- ⑥ Reinforcing steel shall be covered by no less than 1 1/2" inches of concrete in the top and no less than 2" in the rest of the structure.
- ⑦ Floor of the basin (including extended opening for Eng. Std. #3360)
- ⑧ Top of catch basin shall slope 2% toward curb.
- ⑨ Concrete shall be Class 3.
- ⑩ See Engineering Standard #4110 for notes regarding required pavement removal and repair.
- ⑪ Inlet and outlet pipe(s) may be placed in any wall.
- ⑫ Height equals 4" for a 6" curb and 6" for a 8" curb.
- ⑬ Polyethylene barrier, Visqueen 1/4" sheeting, or equal. Overlap Joints 6".
- ⑭ 6" of 1 1/2" in diameter gravel.
- ⑮ Install Catch Basin Placard per Section 78 of the Standard Specifications.



SECTION A-A

REVISIONS	BY	APP	DATE
<i>Revised Note 5</i>	MH	BL	12-09
<i>Allow Class 2R Base</i>	DVB	BL	11-08
<i>Simplify drawing</i>	SR	BL	9-09
STANDARD CURRENT AS OF:			January 2010



CATCH BASIN
SIDE OPENING WITH SUMP

3355