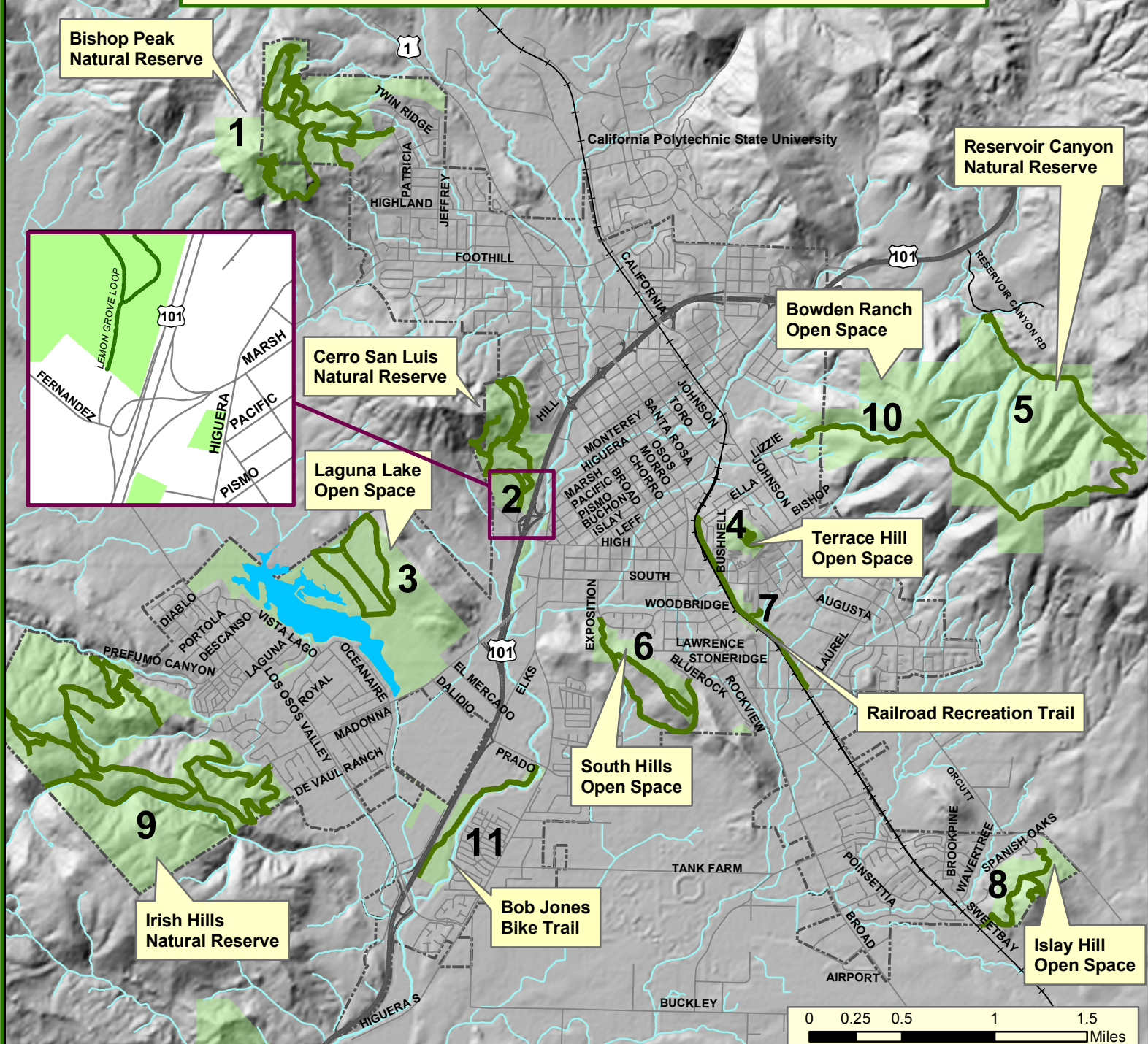


Trailhead Directions

1. Foothill to Patricia, trailhead on left just past Patricia Court
2. Turn right on Fernandez Rd. before merging onto 101 South (see insert)
3. Madonna Road to Dalidio, turn into park
4. Johnson Ave. to Bishop, trailhead on right
5. HWY 101 North to Reservoir Canyon Rd., turn right and follow to end
6. Take Broad St. to Woodbridge or South St. to Exposition
7. Access Via train station, Orcutt Rd. or Bushnell
8. Tank Farm/Orcutt Rd to Spanish Oaks, right on Sweetbay
9. Madonna & DeVaul Ranch Rd. or Los Osos Valley Rd. to Prefumo Canyon Rd., trailhead one mile ahead on left
10. Johnson Ave. to Lizzie St., bear left at "Y", trailhead on right side at end of cul-de-sac
11. Prado Rd. at creek

City of San Luis Obispo Open Space and Recreational Trails



Trail Etiquette

In order to properly enjoy and preserve our Open Space, please observe the following:

1. Stay on designated trails
2. Keep dogs on a leash
3. Pick up after your dog
4. Do not trespass on private lands
5. Do not harass wildlife or livestock
6. Do not remove any vegetation
7. Public access to Cerro San Luis is off of Fernandez Rd. (see insert)
8. Public access to Bishop Peak is off of Patricia and Highland.



Legend

- Trails (green line)
- Open Space (light green fill)
- City limits (dashed line)

